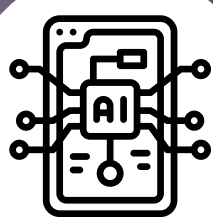
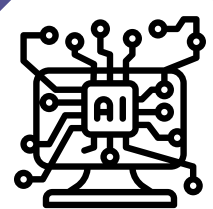


The Six Pillars of Ethical use of AI at NWU



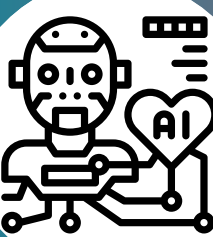
TRANSPARENCY

Be transparent about when and how you use AI in teaching or research. Keep clear records of its use.



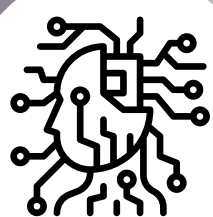
HONESTY

Be honest about AI use in all academic work. Follow the rules set by your lecturer, supervisor, or publisher.



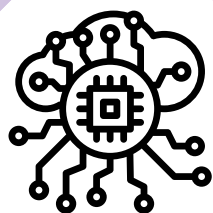
INTEGRITY

Maintain trustworthiness by using AI with integrity. Honest and transparent use of AI is needed to preserve the integrity of your work.



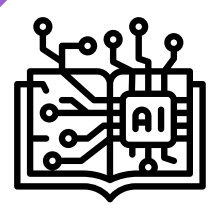
ACCOUNTABILITY AND OWNERSHIP

You are responsible for all content you submit, even if AI was used. AI cannot be held accountable for errors or biases.



REFERENCING AND ACKNOWLEDGEMENT

Proper citations and recognition of the use of AI are needed



PRIVACY, SECURITY AND SAFETY

Always protect privacy when using generative AI, as it poses unique data risks.

The NWU Senate Rules on the Ethical and Responsible use of AI

For the full document, visit [here](#)



1

Use AI only as permitted

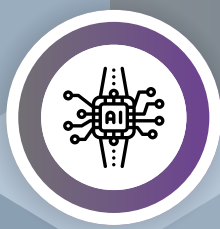
Ensure you understand the lecturer's stance within the 5 levels of AIAS



2

Do not present AI answers as your own

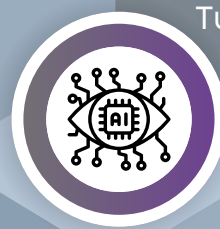
Presenting AI-generated content as your own is a form of academic integrity.



3

Paraphrasing and editing tools are AI

These tools are considered to be AI tools and the use thereof will be flagged by Turnitin. Discuss the use with your lecturer.



4

Be critical of what AI presents

If AI is allowed, critically assess its output. It may be biased or inaccurate, so always verify with reliable academic sources.



5

Paraphrase AI content

If AI use is allowed, always paraphrase in your own words to show understanding. Preserve the original and current research contexts.



6

Add AI tools to your reference list

Proper citations and recognition of the use of AI are vital when the use of AI tools are allowed



7

Keep record of your prompt

Keep a detailed record of all AI prompts and responses used in your work.



8

Copyright and Intellectual Property

Do not use AI to plagiarise or violate copyright or intellectual property rights. Always credit original creators.



9

Be cautious of other's work

Never use AI to review, edit, or improve someone else's academic work or research.



10

Learn and adapt

Stay informed on LLMs, AI ethics, and best practices. Use AI responsibly to protect NWU's reputation. Be open to feedback and adapt to evolving ethical standards.

