

CLEMENT MOHALE

The creative adult is the one who survived

My works captures the beauty and strength of the African continent. The works I create portrays the diverse culture of the African people and how they strive to survive within the harsh environment they live in. Ever since I was a teenager I have been fascinated by the unrelenting divergence of the human condition. Therefore, this led to me devoting my creativity to the less fortunate by capturing and sharing their strives with the audience. The intimate experience with my works thus provides a sense of compassion towards the affected people.

My works explores one's desire to overcome life challenges and becoming resilient in midst of all the trials and tribulations we face. I used different mediums such as charcoal, pastel, acrylic and oil paints, which allows me to express my feelings and inner thoughts. Therefore, I do not limit myself to one medium, idea and or concept. My works consist of basic colours which conveys the mood of the artworks. These lines are entangled with each other representing a degree of emotional, psychological and physical impact experienced by the people in their quest for a normal life.

Inspiration always changes because of life's uncertain circumstances as each day unfolds. My works are inspired by the life challenges that I have encountered while trying to find a fit for purpose in a society that comes with its own standard of ideals. My works reflect the way I interpret the ideas I have about myself and the world I live in.



Behold

Charcoal and Pastel on paper

R3 500 (unframed)

58 x 40,5 cm



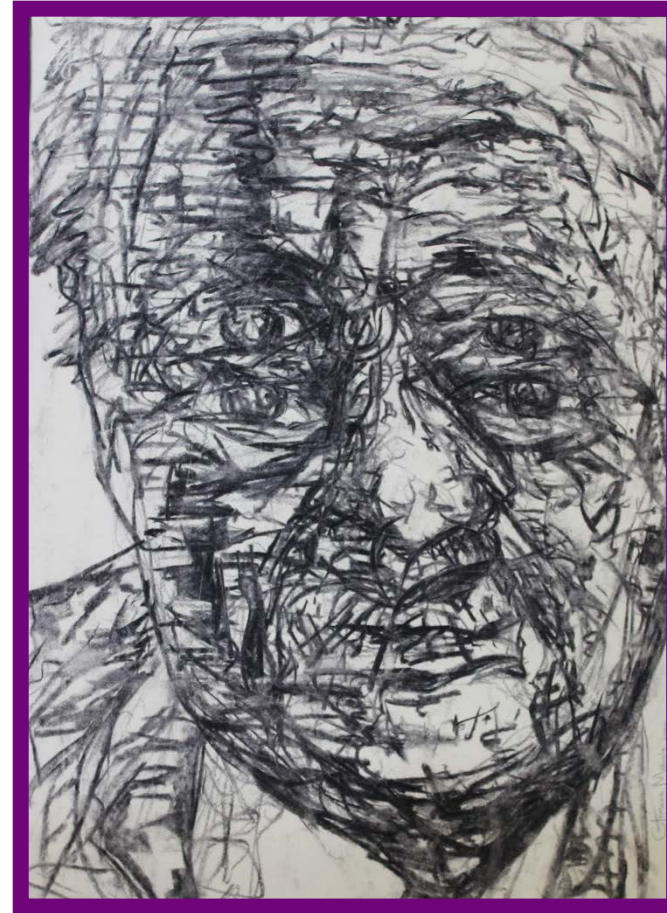
Cry the Beloved Child

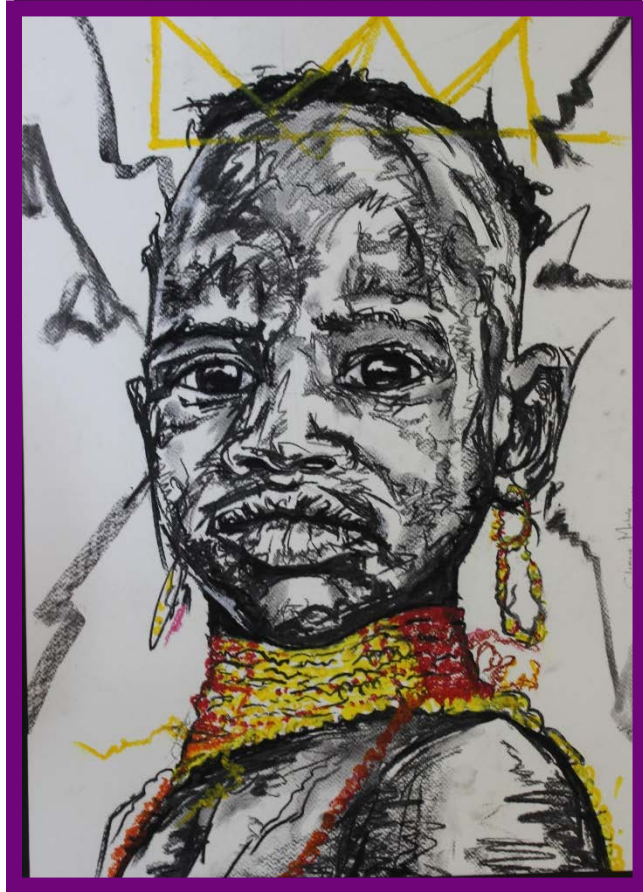
Pen and marker on paper

R3 000 (unframed)

27 x 19 cm

George Bizos
Charcoal on paper
R3 000 (unframed)
50,5 x 36,5 cm



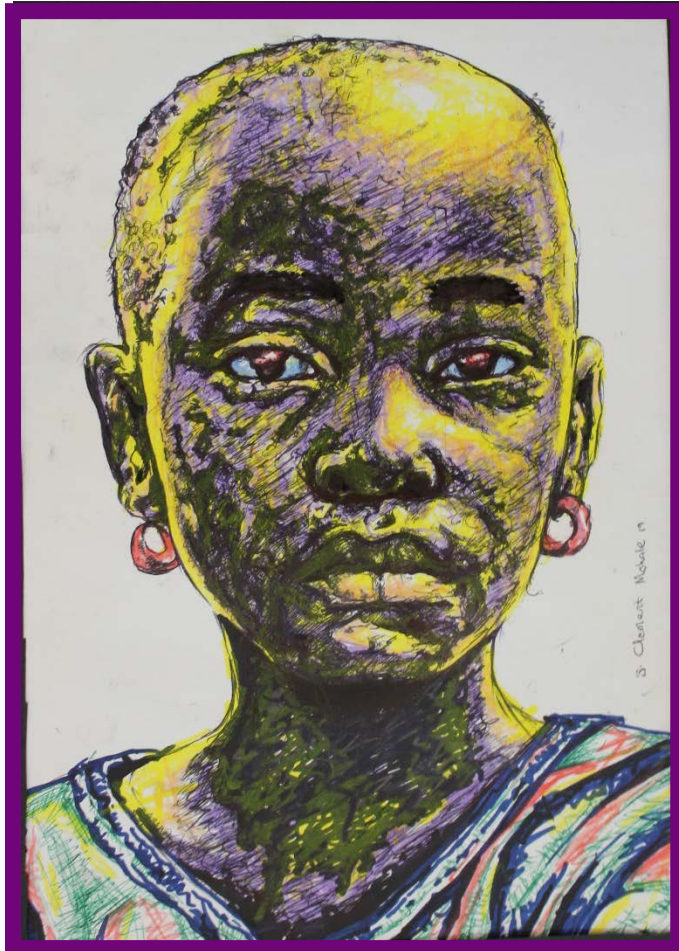


Black Crown

Charcoal and pastel on paper

R5 000 (unframed)

58,5 x 40,5



Solitude

Markers and pen on paper

R3 000 (unframed)

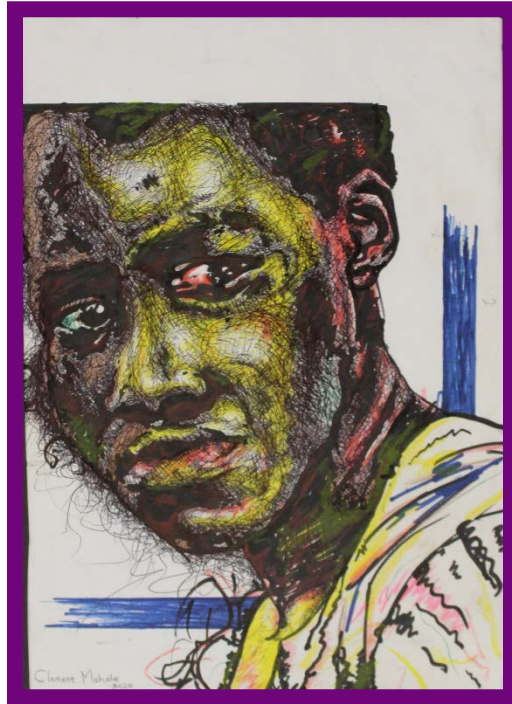
27 x 19 cm

Deception
Pastel and charcoal on paper
R4 500 (unframed)
100,5 x 75 cm



State of Suspense
Pastel and charcoal on paper
R7 000 (unframed)
60 x 84,5 cm





Her Sorrow

Pen and markers on paper

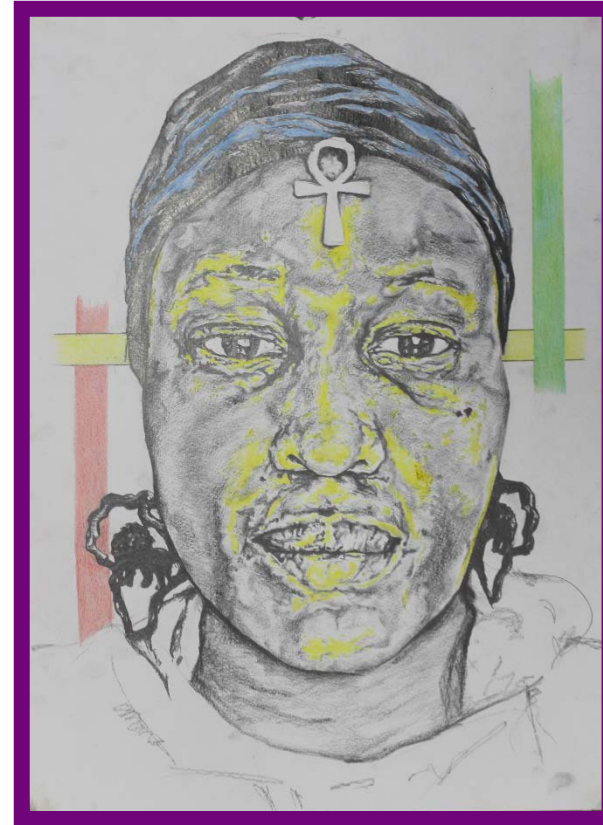
R3 000 (unframed)

27 x 19 cm



Embolden
Charcoal and pastel on paper
R4 000 (unframed)
57 x 40,5 cm

Aura
Pencil on paper
Not for sale
43 x 31 cm





Rest when you can
Pencil on paper
R1 000 (unframed)
19 x 27 cm



Food for thought
Pencil on paper
R1 000 (unframed)
19 x 27 cm

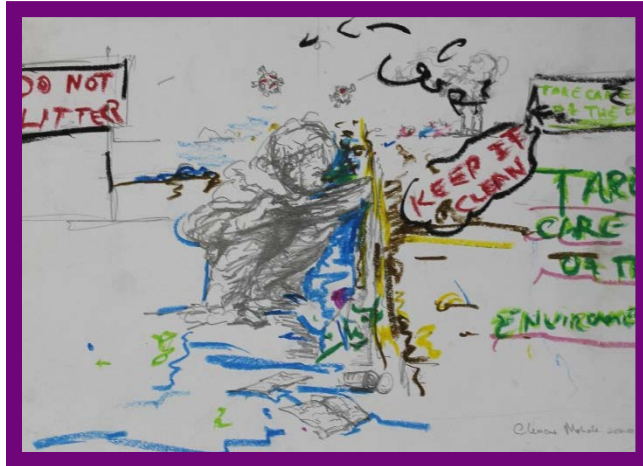


Bear with Me

Pencil and charcoal on paper with fumage

R4 000 (unframed)

36,5 x 50,5 cm



Take care of the environment
Pencil and pastel on paper
R1 000 (unframed)
20 x 28,5 cm



Stop Water Pollution
Pencil on paper
R1 000 (unframed)
20 x 28,5 cm



Amongst Us

Pencil on paper

R3 000 (unframed)

37,5 x 24,5 cm



Africa Water Crisis
Pencil on paper
R2 500 (unframed)
19 x 27 cm



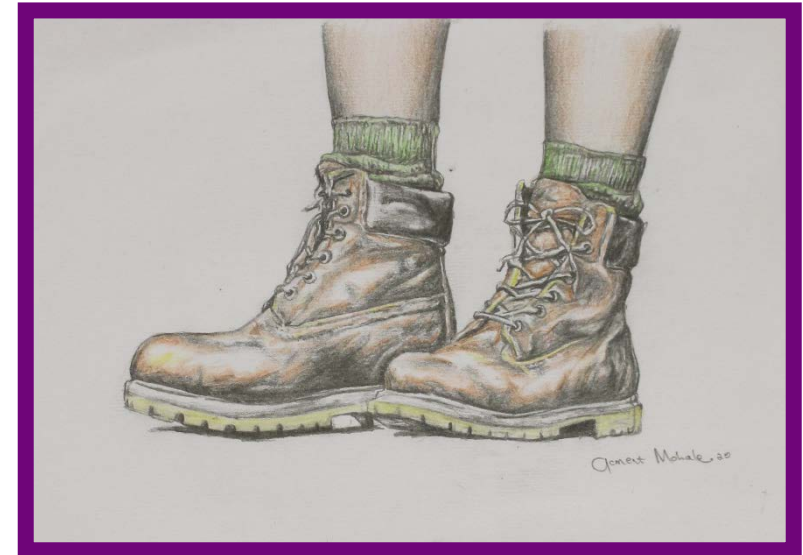
Meant to Create

Pencil on paper

R1 000 (unframed)

19 x 27 cm

Walk Your Path
Pencil on paper
R1 000 (unframed)
19 x 27 cm





Unprecedented Times

Pencil on paper

R2 500 (unframed)

23,5 x 31,5 cm

NWU Gallery

CLEMENT MOHALE

The creative adult is the one who survived

13 October 2020

