

Working late, no need to stay after hours

**Use
VPN!**



AND WORK IN THE COMFORT OF YOUR OWN HOME ...

This service enables the user who is not on campus to work on the NWU network as if being on campus with access to all services (e.g. HPC).

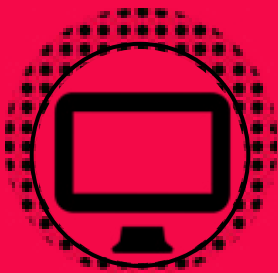
UNBELIEVABLE!

How do I request for virtual private network (VPN)?



Staff: The Line Manager has to provide permission first, by means of a:

- GroupWise email motivation, accompanied by his/her signature, addressed to you
- *Log a ticket* and copy and paste the GroupWise motivation and signature into the service request,
- or alternatively, contact your IT Service Desk by clicking your corresponding campus name: *Mafikeng, Potchefstroom, or Vaal Triangle.*



Internet at home is a requirement. You first must be able to access via an external ISP (or the PCN network) which must already be in place. The VPN makes a connection on top of the current Internet Connection.



Postgraduate Students: Contact your IT Service Desk by clicking your corresponding campus name: *Mafikeng, Potchefstroom, or Vaal Triangle.*



Click to view the VPN Guide or alternatively use the following url - <http://www.nwu.ac.za/sites/www.nwu.ac.za/files/files/i-information-technology/service-catalog/vpn/VPNInstallationGuide.pdf>

Need more help?

MAFIKENG CAMPUS

Building A1, Room 131
(+27 18) 389 2370/1

POTCHEFSTROOM CAMPUS

Building F20, Room 111
(+27 18) 299 2700

VAAL TRIANGLE CAMPUS

Building 8, Room 120
(+27 16) 910 3321/4