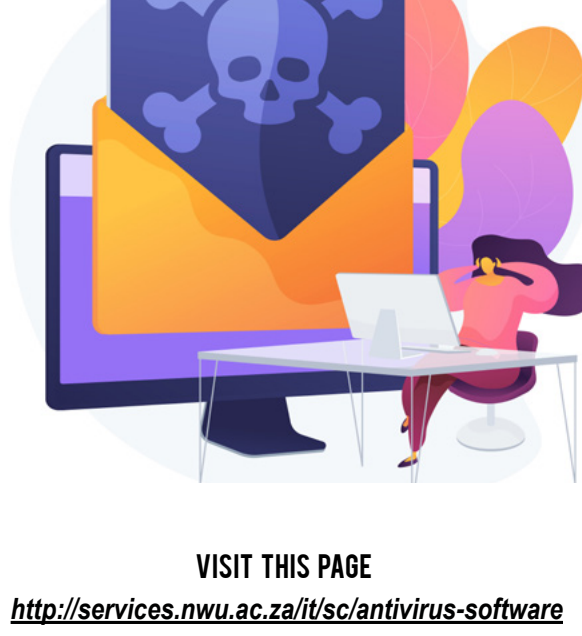


User Guide: IT Services

Antivirus Software

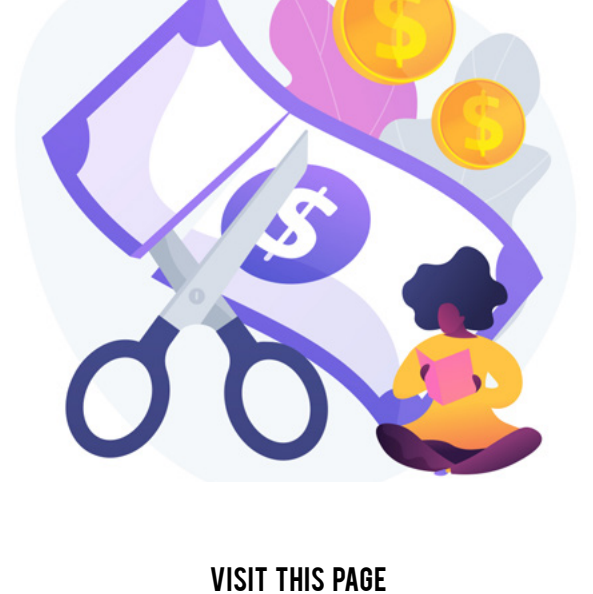
Microsoft's antivirus software provides protection of Windows workstations against virus attacks and malware intrusions. Microsoft Security Essentials is used for Windows 7 and Microsoft Defender is used for Windows 8/8.1 and Windows 10.



VISIT THIS PAGE
<http://services.nwu.ac.za/it/sc/antivirus-software>

COST?

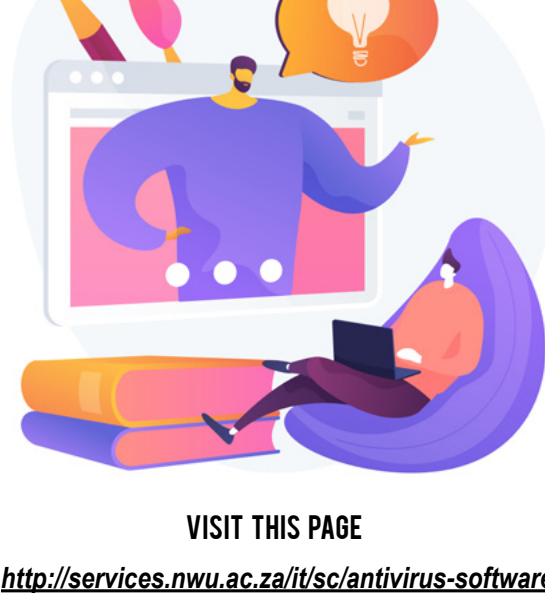
Free of charge



VISIT THIS PAGE
<http://services.nwu.ac.za/it/sc/antivirus-software>

Who can all use this service?

Students and Staff



VISIT THIS PAGE
<http://services.nwu.ac.za/it/sc/antivirus-software>

Exclusions

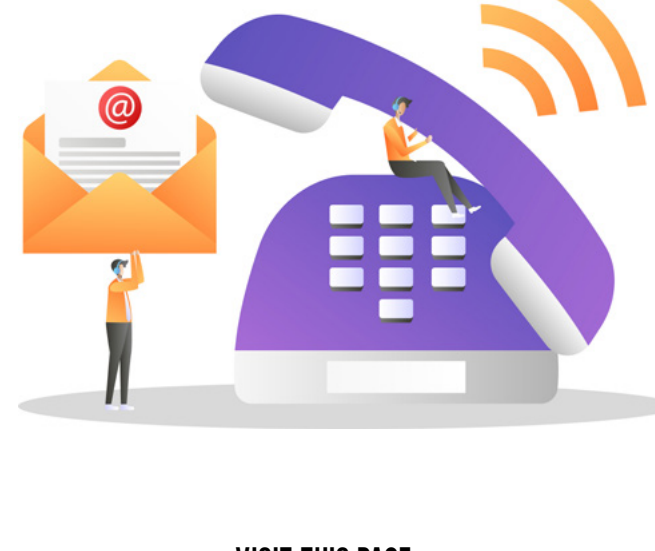
Microsoft's antivirus software only protects Microsoft Windows Operating System Workstations – all other Operating Systems are excluded.



Prerequisites

An authentic Microsoft Windows workstation installation is required (a cracked operating system installation will not be protected).

The NWU network is to be accessed regularly for the Microsoft antivirus software to be updated on the workstations.



VISIT THIS PAGE
<http://services.nwu.ac.za/it/sc/antivirus-software>

How to request this service?

It is installed by default on each Windows workstation as part of the standard applications.



Need more assistance?



CONTACT IT: **Staff**

Log a [ticket](#) or contact your IT Service Desk.



CONTACT IT: **Students**

[Email](#) your IT Service Desk.

Documentation

SECURITY ESSENTIALS OPERATIONAL GUIDE

VISIT THIS PAGE

