

## User Guide: IT Services

### Afrikaans Spellchecker

This service involves the installation and provisioning of an Afrikaans spell-checker for Microsoft Office.



VISIT THIS PAGE

<http://services.nwu.ac.za/it/sc/afrikaans-spellchecker>

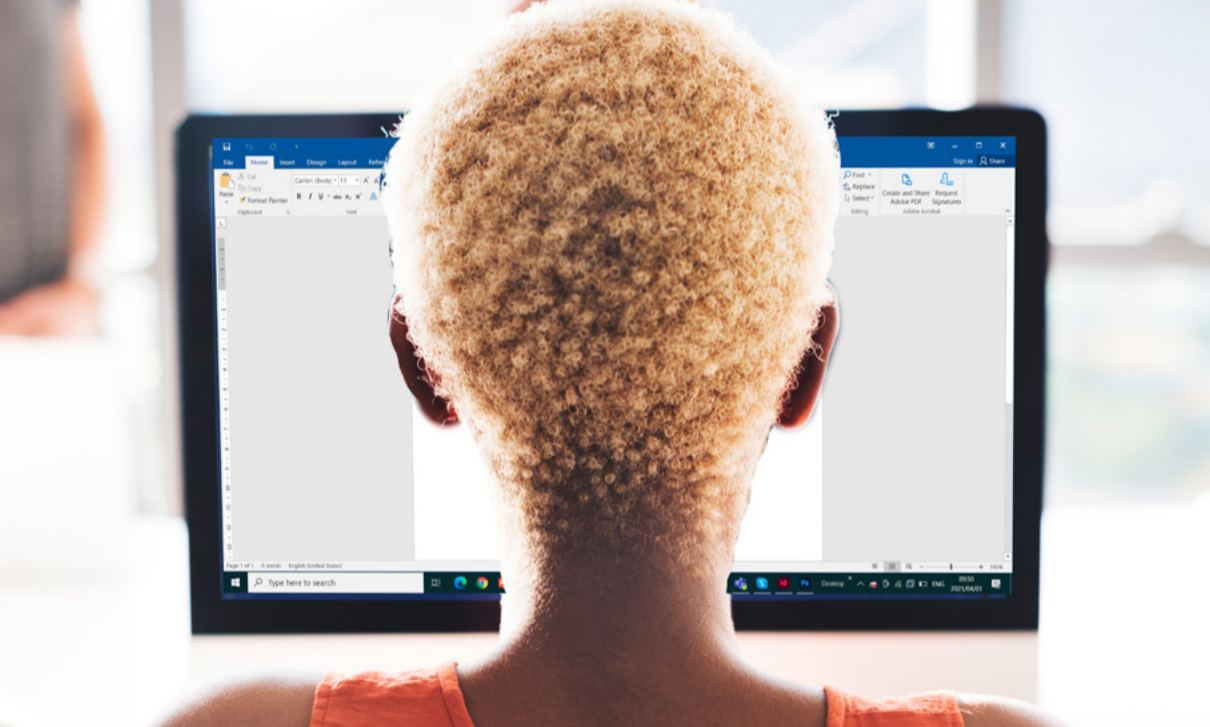
### Additional Information: Usage

The Afrikaans spellchecker is only installed on official NWU workstations (for staff and computer rooms). Private licenses may be purchased from [BlueTek](#).



### Service for students?

Students can only access the Afrikaans Spellchecker from a workstation in the Computer Rooms.



### Prerequisites?

Microsoft Office must be installed on the workstation.



### How to request this service?

**Staff:** Log a [ticket](#) or contact your IT Service Desk.

**Students:** Contact your IT [Service Desk](#).



### How to report a problem with the service?

**Staff:** Log a [ticket](#) or contact your IT Service Desk.

**Students:** Contact your IT [Service Desk](#).



VISIT THIS PAGE

[View the installation documentation here](#)

All services may be access in our IT Service Catalogue. Follow these steps:  
<http://services.nwu.ac.za/ithome> > [Service Catalogue](#)