

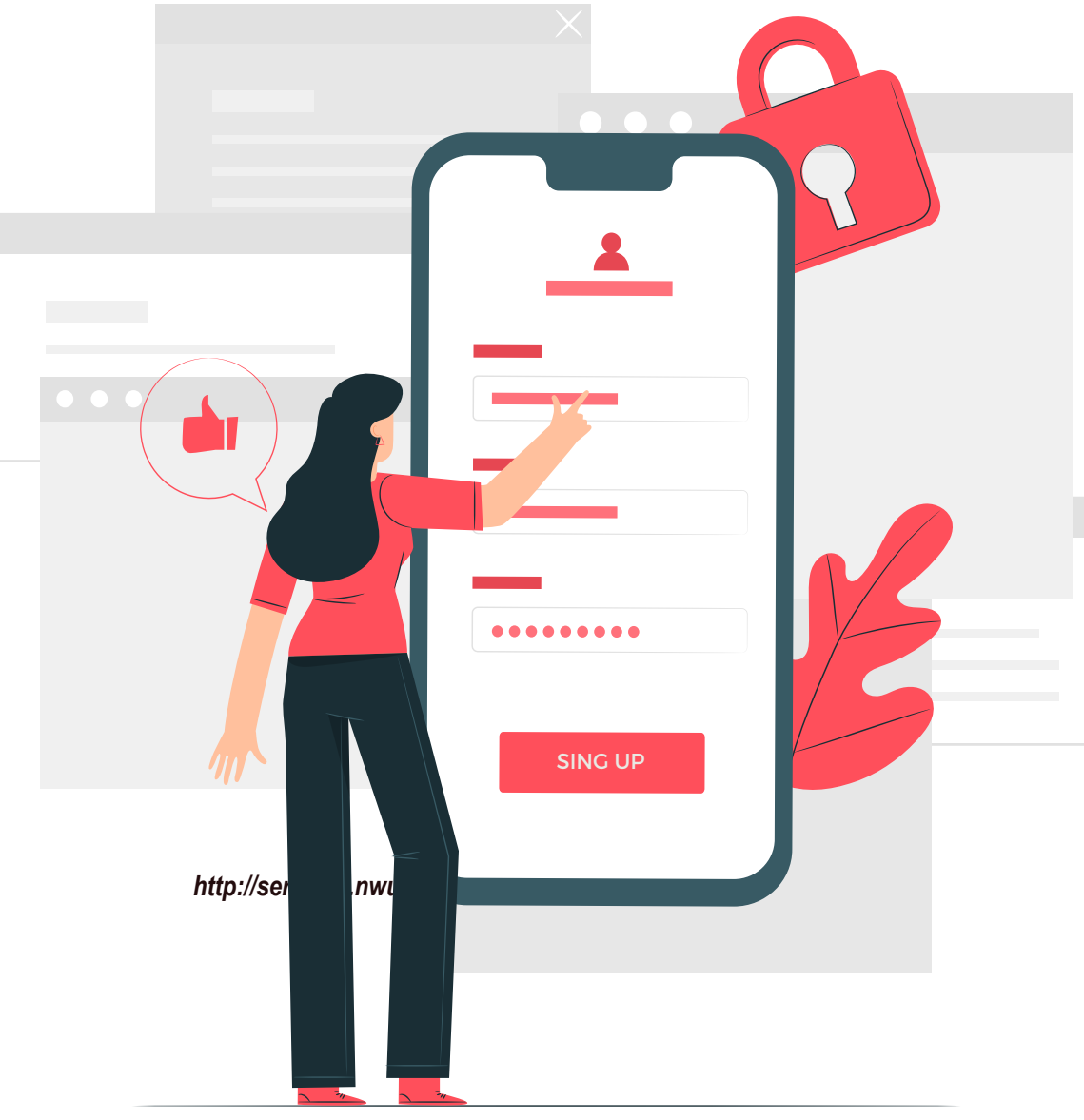
SERVICE CATALOGUE

Driving Digital Transformation in the 4th Industrial Revolution

User Guide: IT Services

Password Management

When you are new to the NWU and receive your NWU number, your password is set to your RSA ID number@Nwu, or in the case of international students, your passport number@Nwu eg 1234567890123@Nwu.



Next Step: You then have to change your password.



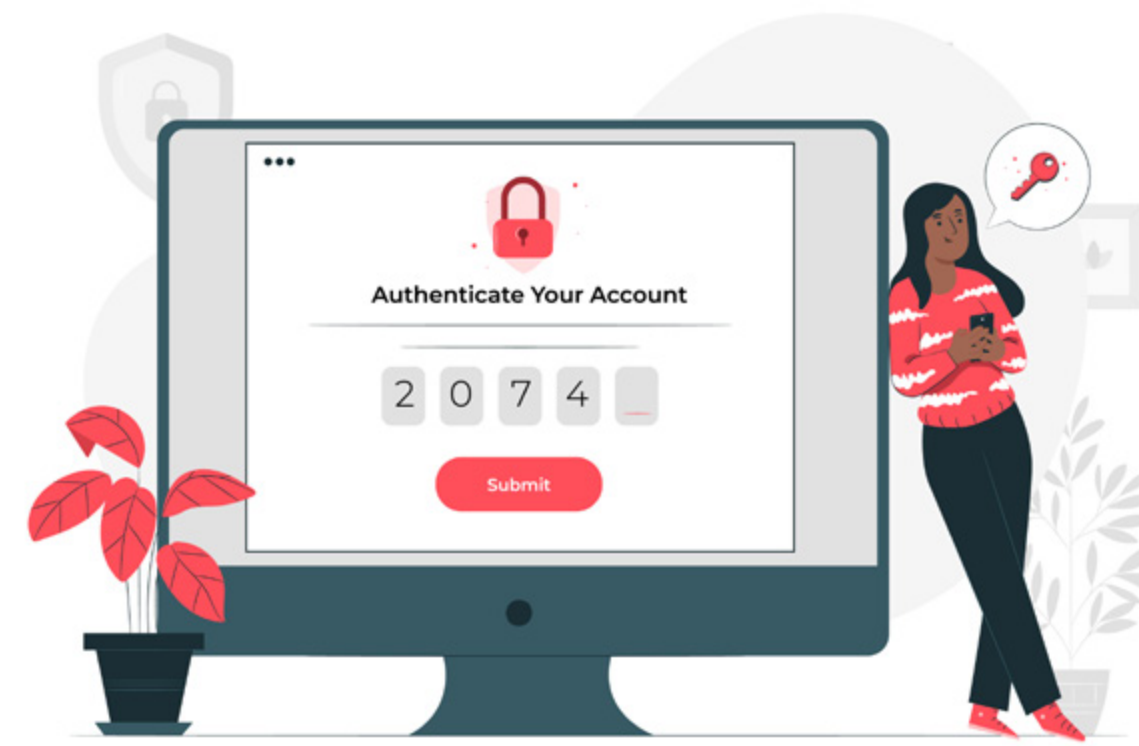
VISIT THIS PAGE

<https://password.nwu.ac.za>

Forgot your password?

Here is what to do

USE THE LINK ABOVE



Need more assistance?

CONTACT IT: Staff

Log a [ticket](#) or contact your [IT Service Desk](#).



CONTACT IT: Students

[Mail](#) your IT Service Desk.

